

Hermetic Door

GAN Hermetic Doors are perfect for laboratories, operating theatres, clean rooms, and the pharmaceutical industry, where controlling air exchange is vital.

Hermetic Door



Proud
Made in
Indonesia

Certified Company
ISO 9001 : 2015

GAN Hermetic Doors are perfect for laboratories, operating theatres, clean rooms, and the pharmaceutical industry, where controlling air exchange is vital. These swing doors are equipped with an advanced hermetic sealing system, providing airtight security. Ideal for critical areas, they enhance hygiene control and reduce air handling, cross-contamination, and wound infections with their precise and reliable sealing.

-  Material : Stainless Steel
-  Frame Plate Thickness : 1.0 mm
-  Door Plate Thickness : 0.8 mm
-  Insulated : Honey Comb
-  Hinges : 4 Pcs
-  Door Thickness : 40 mm
-  Finishing : Hair Line
-  Accessories : 



INSULATION
SYSTEM



ANTI
BACTERIAL



SOUND
PROOF



SWING DOOR



SLIDING DOOR

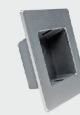
ACCESSORIES

Hinge



Evaloc Flag Hinge

Foot Sensor



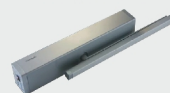
Evaloc 2515 Foot Sensor

Hand Sensor



Evaloc 2518 Foot Sensor

Automatic Swing Operator



Evaloc Automatic Swing Operator

Automatic Sliding Operator



Evaloc Automatic Sliding Operator

Automatic Concealed Bottom Seals



Evaloc M0202B

*The measurement
can be customized with
minimum order*

Door Type	Door Leaf (mm)	Frame (mm)
Single Door	930 x 2200	1000 x 2240
	1130 x 2360	1200 x 2400

Interior	Right Hand (RH)	Left Hand (LH)	Right Hand Reverse (RHR)	Left Hand Reverse (LHR)
Exterior				

